



The Gun 12K

Operations Manual

Contents

Intital Setup.....	1
Main Screen.....	2
"Shoot Now" Mode.....	3
Drills.....	5
Settings.....	6

Initial Setup

When using your 12K for the first time,
follow the steps below

Step 1

Plug your 12K Gun into the nearest 110 Volt outlet using one extension cord (multiple cords will burn up the motor).

Step 2

Power up your machine by flipping the switch near the power cord and allow for 20 seconds for The Gun 12K to boot-up.

Step 3

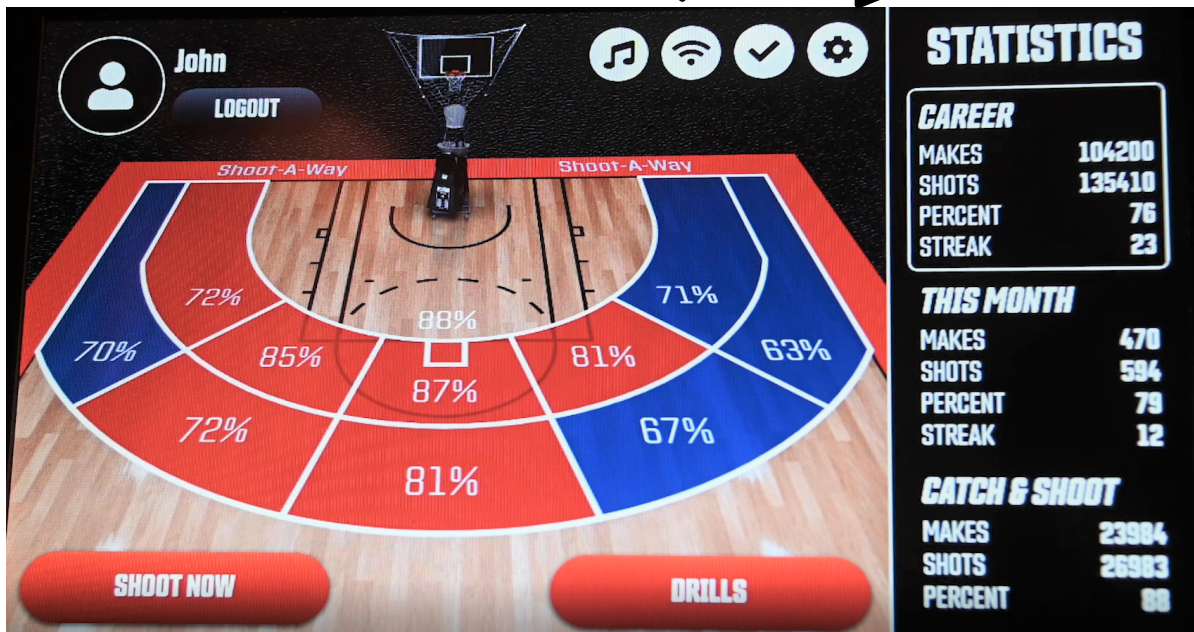
Follow the on-screen prompts to set-up and register your Gun 12K.



You do not need to be connected WiFi to use the features on The Gun 12K. But you will need to be connected to WiFi to receive software updates, upload new drills, and send your stats to the cloud to be saved and viewed online.

Main Screen

Manage WiFi Connection
Manage Bluetooth devices and volume
Network Syncing Indicator
Enter your Gun Pin to access the Gun's settings



Tap "Shoot Now" to quickly program The Gun and start shooting

Tap "Drills" to view pre-programmed drills

Customer Service

800-294-4654

9am-5pm EST, Mon-Fri

"Shoot Now" Mode



Shots

Toggle between Shots Per Spot, Must Be Made and Made In A Row

Per Spot

Select the amount of shots to be taken Per Spot, or Made At a Spot or Made In A Row

Seconds Between Throws

Select how many seconds between each pass from The Gun you would like

Sequence Shooting

If this box is checked, The Gun will rotate to your locations in order of the numbers of the balls. If the box is unchecked, The Gun will rotate to the next location based around the perimeter in a windshield wiper action.

Challenge (Advanced)

Challenge the shooter to complete the drill based on either duration or time of a workout, made shots, total shots taken, or number of runs.

Number Of Runs

This will determine how many times The Gun will cycle through the current programmed workout. You can choose any number or choose "Infinite Runs" and The Gun will cycle through the workout until you push stop

Clear Locations

This will clear all locations on the court. To delete a single location, drag and drop the ball above off of the court.

Customer Service

800-294-4654

9am-5pm EST, Mon-Fri

"Shoot Now" Mode Custom Programming



Touch any ball that you have on the floor to customize that location's parameters. Each Ball (location) is programmed together unless you touch a spot to "make custom".

For example, if you want to take 2 shots at Ball #1 before it moves on to Ball #2, you would touch Ball #1, and checkmark "Make Custom" to activate the custom settings for that spot and change the "Per Spot" selection to 2. You can also customize the seconds between passes and the Shot Type.

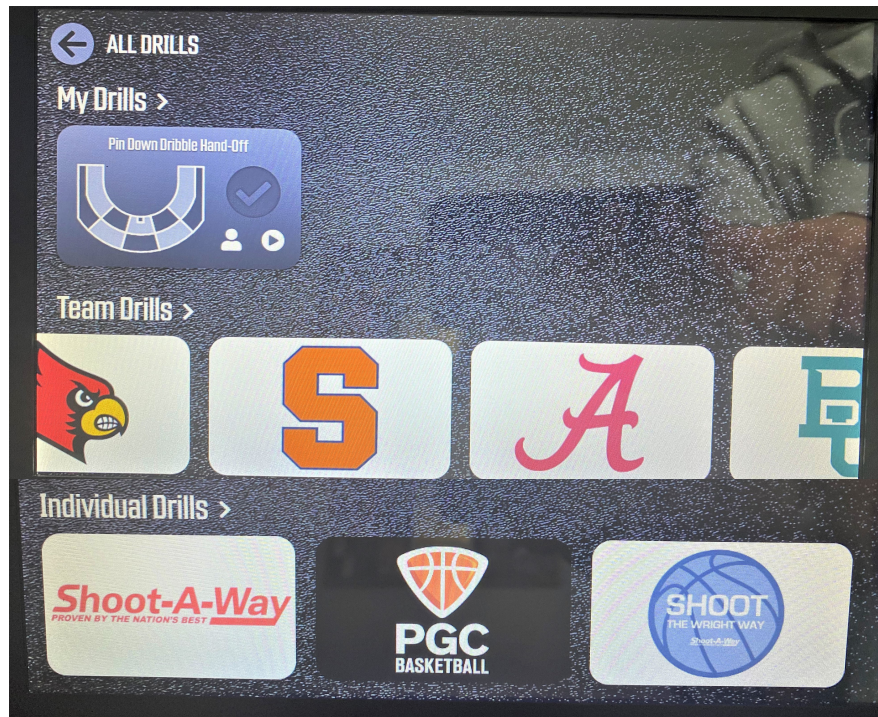
Shot Type – This will determine how The Gun keeps stats for a specific spot. You have three choices; Catch & Shoot, Off The Dribble or On The Move.

Customer Service

800-294-4654

9am-5pm EST, Mon-Fri

Drills



My Drills

Any drills that you save from "Shoot Now" will appear under My Drills. You can also create drills on your computer at gun.shootaway.com using your account login and they will appear here as well.

Team Drills

These are team drills from the top college coaches in the country and are made available by Shoot-A-Way. New drills will be released as they become available. You need WiFi to receive any updates.

Individual Drills

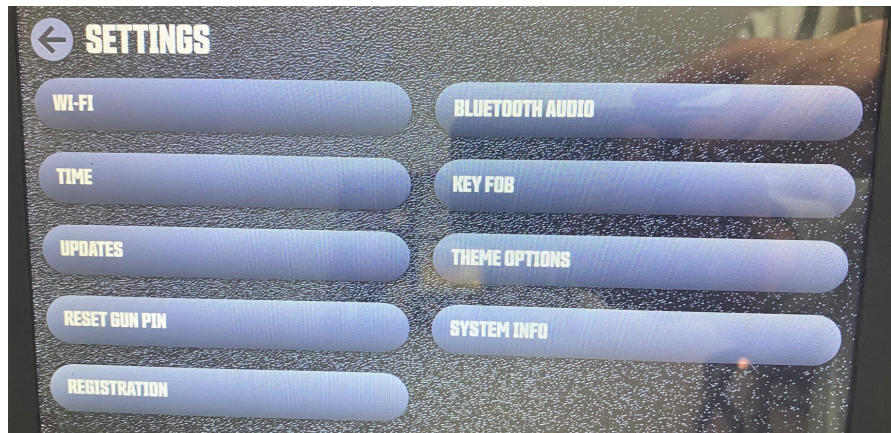
These are individual drills from the top trainers that are made available by Shoot-A-Way. New drills will be released as they become available. You need WiFi to receive any updates.

Customer Service

800-294-4654

9am-5pm EST, Mon-Fri

Settings



Wi-Fi

View available Wi-Fi connections

Time

Adjust the local time of your Gun

Updates

Check for available software updates when connected to WiFi

Reset Gun Pin

Reset your Gun Pin that lets you access the Settings

Registration

This will show you the registration information from when it was initially set-up

Bluetooth Audio

You can manage your available Bluetooth Connections here

Key Fob

Program a new remote for your Gun here

Theme Options

Customize the colors and text that is shown on the baseline of your court

System Info

This will show the total shots taken on your Gun for it's lifetime, total makes, as well as total time it has been ran and the total time is has been turned on.

Customer Service

800-294-4654

9am-5pm EST, Mon-Fri